



# KIDS ACTIVITY BOOK

Schools are closed and you are spending more time at home. Homeschooling can be fun but sometimes you just run out of things to do. We're a pretty creative group so we thought we would try to help. We put some activities together that we like to do.

**We hope you like them !**



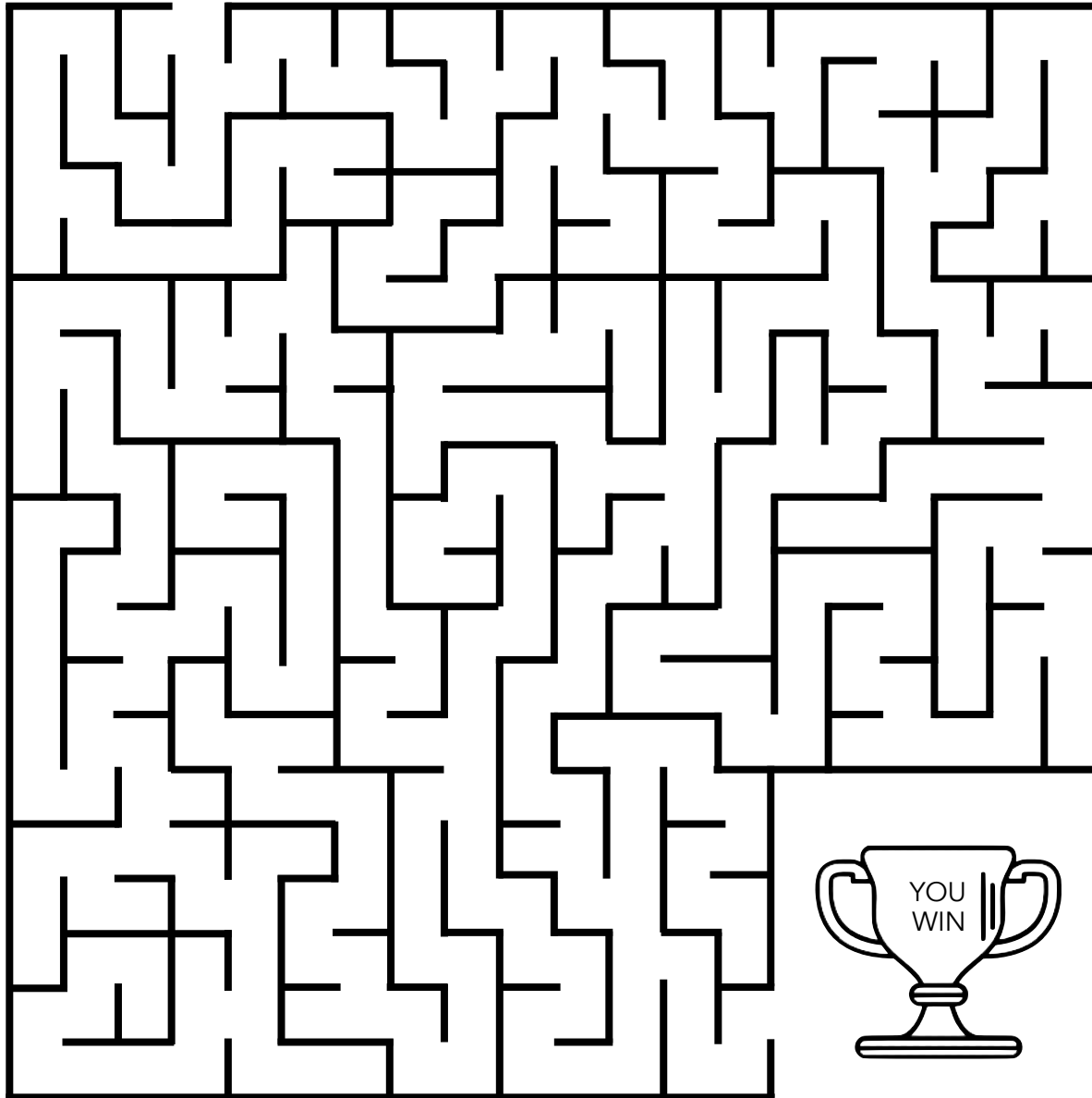
**Let's Color!** We have a good friend whose name is Chris. He can draw really well. One of the things he loves to draw is cartoons. He can even draw cartoons of craftsmen. Craftsmen know how to build things. This craftsman never does anything without his hammer!



[www.emdoodle.com](http://www.emdoodle.com)



START  
HERE



# MAZE

Can you find your way through the maze?

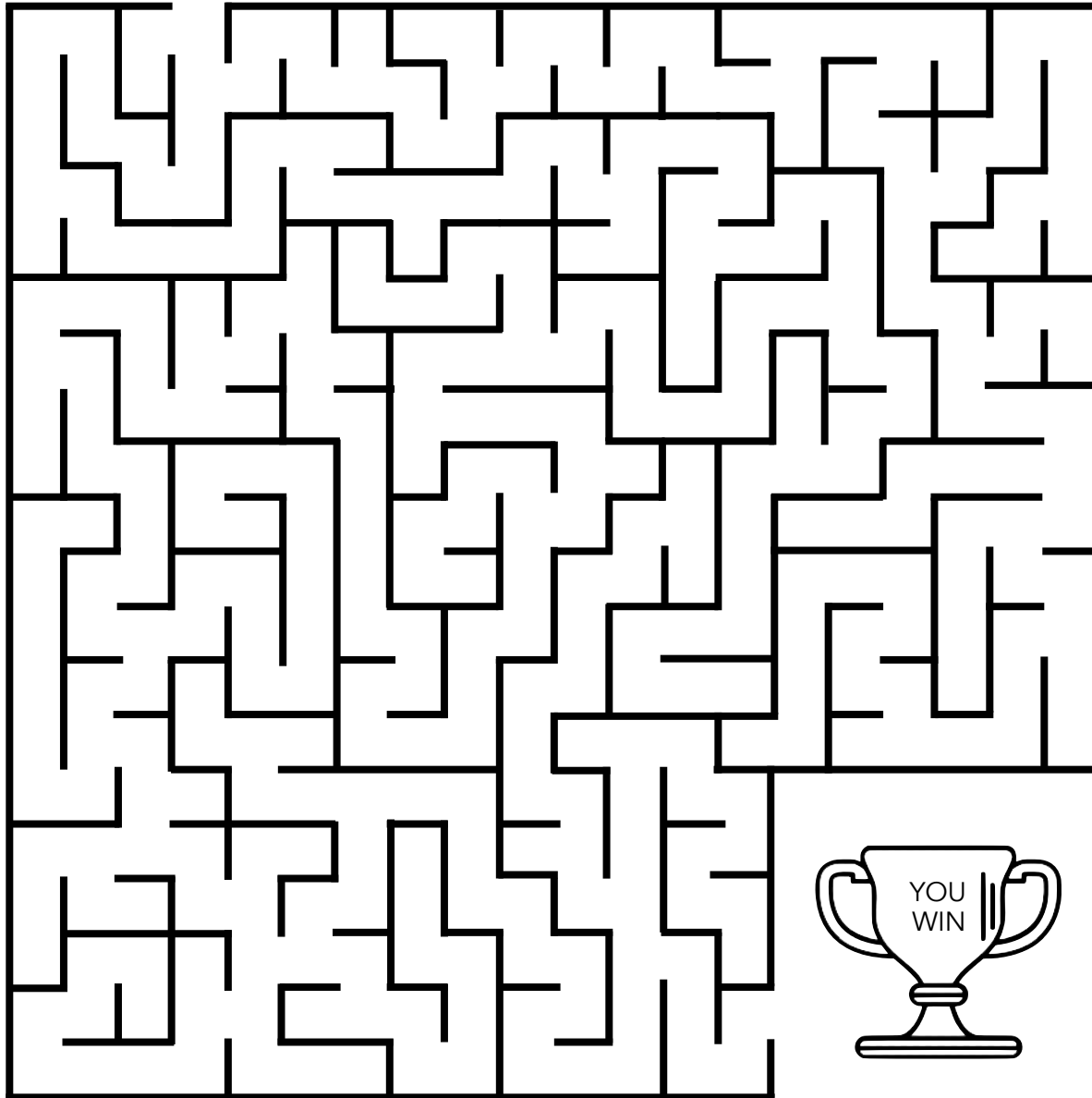
---

After you have made your way to the trophy, hide the answer. Now, try it again 3 more times and time yourself. What's your best time?

---



START  
HERE



# MAZE

Can you find your  
way through this  
one?

---

Congratulations!  
You made it through the  
maze. You must be really  
smart. Ready for another  
challenge? This one is a  
little harder.

---

# WORD FIND

C	M	N	T	F	S	Z	P
A	U	R	P	R	U	N	L
T	F	S	W	I	M	O	A
G	B	I	K	E	K	J	Y
A	E	N	R	N	U	A	Q
W	F	V	A	D	O	G	E
S	U	M	M	E	R	F	D
A	N	T	I	L	V	S	M

Can you find these words in the puzzle?

BIKE	CAT	DOG
FRIEND	FUN	PLAY
RUN	SUMMER	SWIM

L	K	E	E	X	J	B	E	B	A	G	Y
A	X	G	C	H	W	F	E	G	S	N	R
K	D	E	N	C	U	A	H	D	R	I	E
E	N	E	E	N	C	Z	N	E	Y	D	M
E	U	O	I	H	Y	E	H	C	W	A	M
I	R	H	C	C	I	C	T	D	V	E	U
P	A	U	S	R	A	P	O	O	L	R	S
M	A	V	F	E	L	O	O	H	C	S	H
M	A	R	T	O	C	E	A	N	F	C	B
X	N	T	T	K	P	M	X	D	N	Y	I
E	T	Y	H	Y	P	C	Q	U	T	I	K
P	U	Z	Z	L	E	B	L	Y	V	K	E

This puzzle is much harder but you can do it! Try to find these words.



BIKE	SCHOOL	BEACH	FUN
LAKE	TEACHER	PARTY	MATH
OCEAN	FRIENDS	READING	POOL
PUZZLE	LUNCH	SCIENCE	RUN
			SUMMER

# INDOOR SCAVENGER HUNT

It's time for a scavenger hunt!

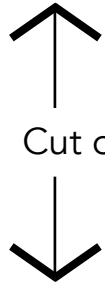
There are two ways to play:

1. Find everything on the list to win
2. Play scavenger hunt tic tac toe

 HAT	 ENVELOPE	 PENCIL	TOILET PAPER  CAREFUL- IT'S PRECIOUS !	 A RED BOOK
Something that is your favorite color	 BAND-AID	 FLIP FLOPS	 CELL PHONE	 SHAMPOO
 PAPER CLIP	 CRAYON	One of your favorite foods	 PUZZLE PIECE	You have to wash your hands
 Q TIP	 TEA CUP	 STUFFED ANIMAL	 WOODEN, PLASTIC, OR RUBBER SPOON	 BLACK SOCKS
 TAPE	Something that starts with a G	 TOOTHBRUSH	 BACKPACK	A piece of candy

# WHAT IS IT?

Can you tell?



Cut out this area

FOLD  
HERE

FOLD  
HERE

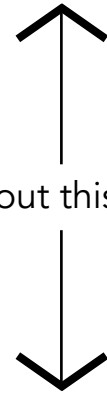
FOLD  
HERE

FOLD  
HERE

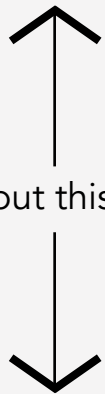
FOLD  
HERE

FOLD  
HERE

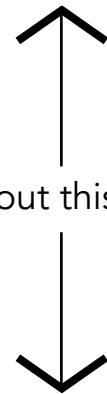
Cut out this area



Cut out this area



Cut out this area





# YOU NEED A FEW THINGS TO SOLVE THE MYSTERY

PRINTER  
SCISSORS

TAPE

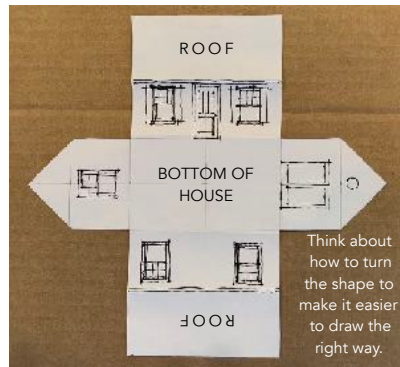
PENCIL OR PEN  
COLORED PENCILS

OR  
MARKERS



1

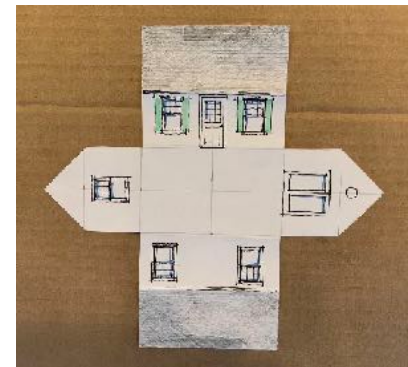
First, cut out the shape with scissors.



2

Next, draw on your "elevations" - be creative!

Think about how to turn the shape to make it easier to draw the right way.



3

Time to color! Is your house brick or siding?



4

Time to fold! It is easier if you fold everything at once



5

Tape time! We started with the roof- did you?



6

We taped the sides last but you can do them first.

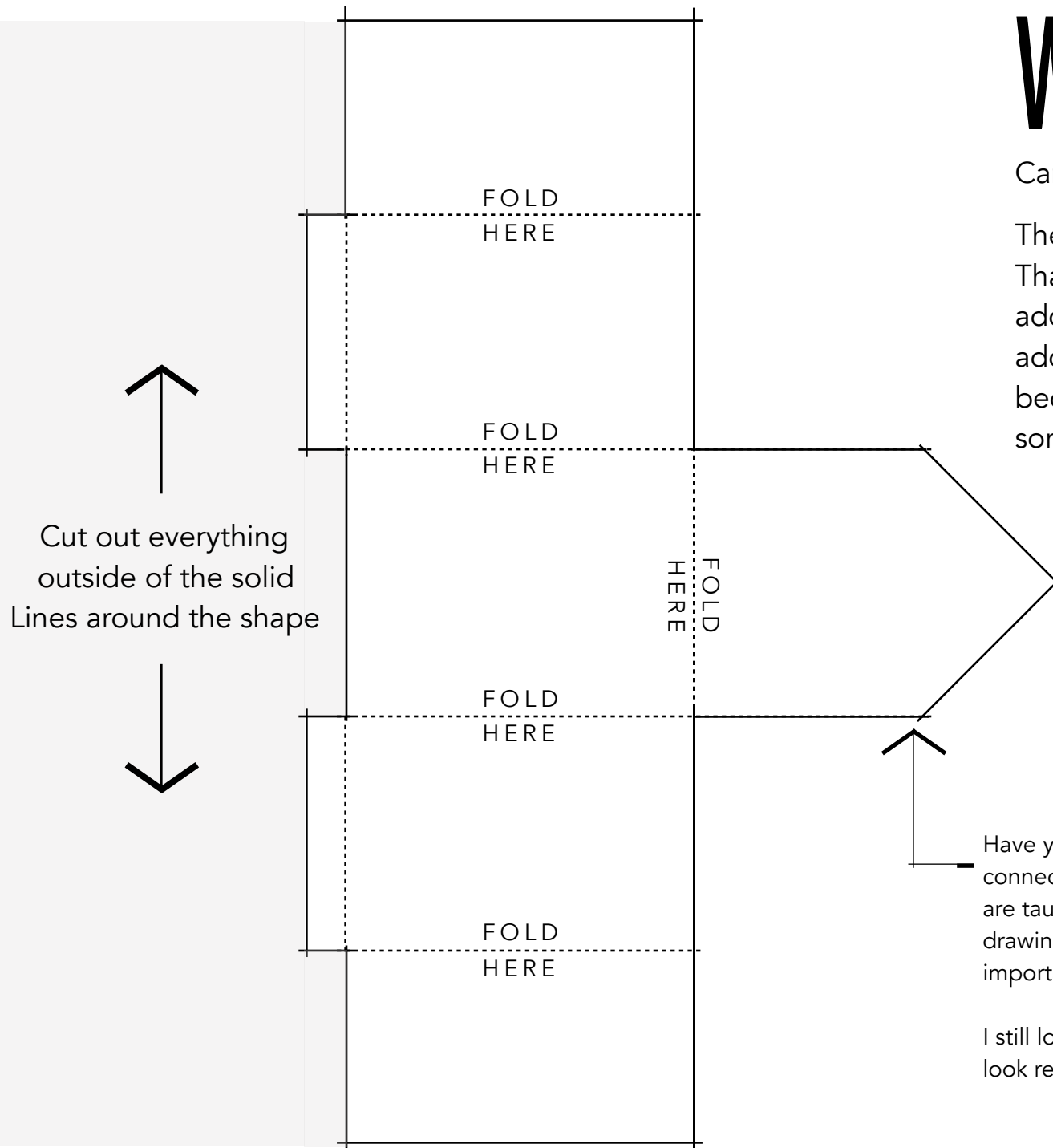


DONE !

# WHAT IS IT?

Can you tell?

The house we made is a little small. That's not a problem! We can build an addition. What kind of room is in your addition? It could be a garage, bedroom, bathroom, kitchen or something else. You decide.



Have you noticed how the lines overlap when they connect? If you go to school to be an architect, you are taught to always overlap at corners. Today most drawings are done on a computer so this isn't as important. A computer can make perfect corners.

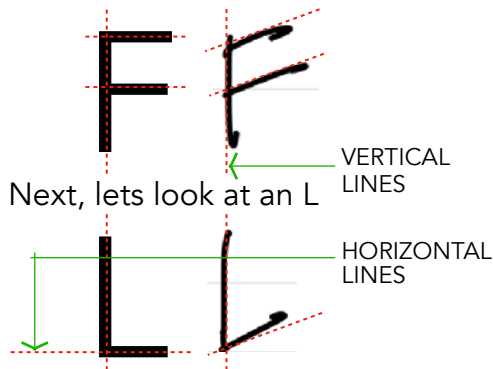
I still love to draw by hand. I think the drawings look really good. I hope you love to draw too!

# CAN YOU WRITE LIKE AN ARCHITECT ?

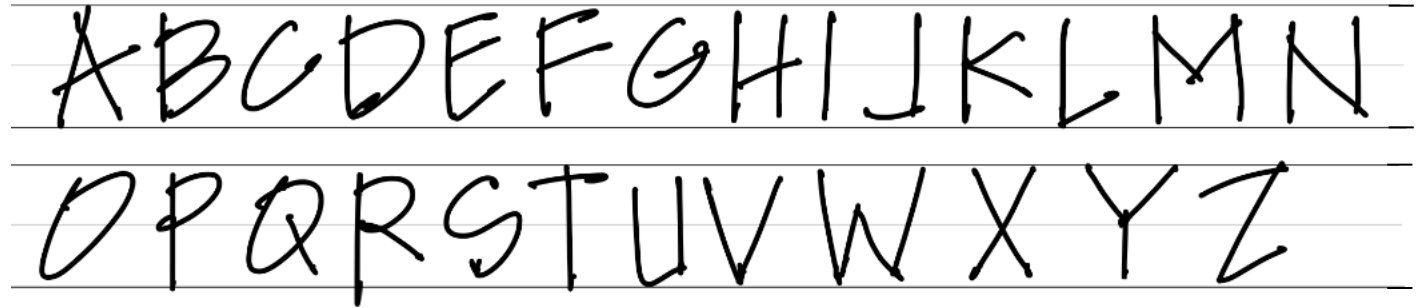
If you are going to design houses and additions, it's time you started to write like an architect. It is a little different than the way most people write.

Architects often write in all capital letters, and their letters often have a little bit of a slant.

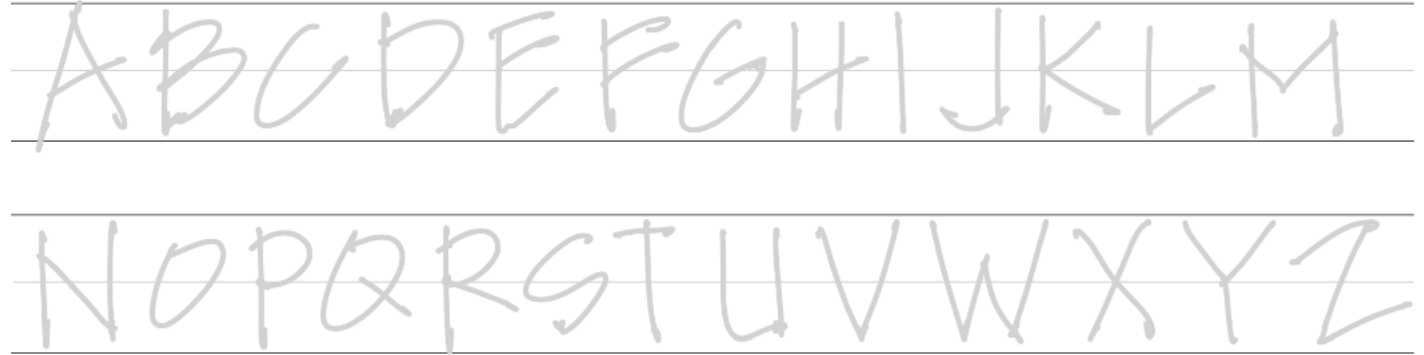
Let's take a look at an F:



Lines that go  $\longleftrightarrow$  are called horizontal lines. Our lines are not horizontal- they are angled.



TRACE OVER THESE LETTERS TO LEARN HOW TO DO IT



**YOUR TURN !** SHOW US HOW YOU CAN WRITE LIKE AN ARCHITECT.  
DON'T FORGET THAT YOU NEED TO ANGLE OR SLANT YOUR HORIZONTAL LINES !

Blank handwriting practice lines for the 'YOUR TURN' section, consisting of multiple sets of three horizontal lines.

Thank  
you

We had so much fun putting these activities together. Thank you for playing with us!

We hope you are back at school soon to see all of your friends and teachers. I'm sure they miss you.

There are so many other activities you can do. Need an idea?

---

**WRITE**

- a story about your first day back at school, what do you want to do?
- a story about your best friend

**COUNT**

- How many windows are in your house? Or stairs? Or doors?

**READ**

- Find a book to read

**DRAW**

- I bet you are a really good artist- find something to draw.

**BE CREATIVE !**

- Dance, sing, draw, practice an instrument, create art- do something you love!
-